



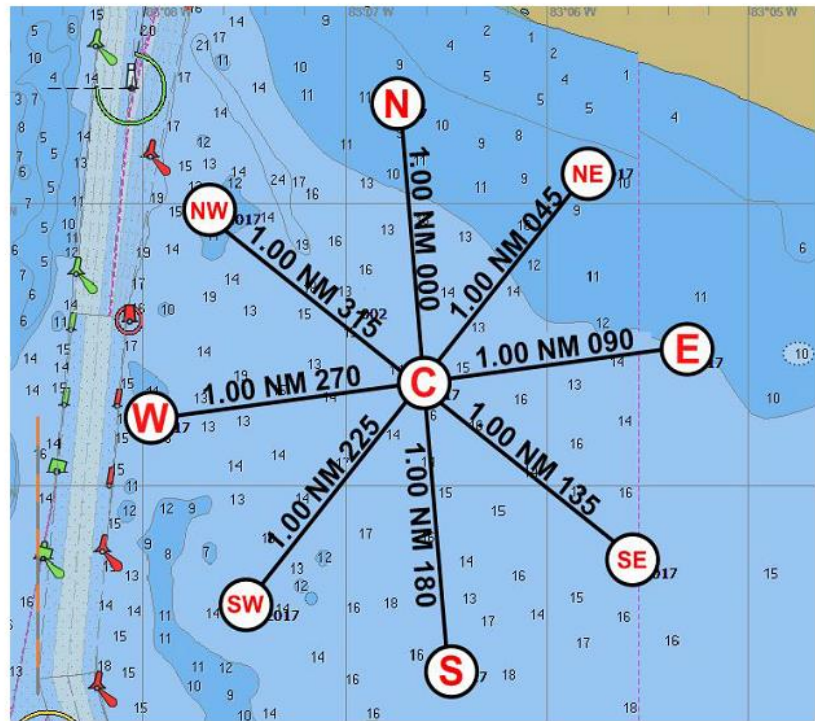
2016 Midsummer Series

Course

All races will utilize the West Shore Sail Club WNATR buoys and current West Shore Sail Club WNATR courses. The race committee boat will post the course designation for each race either with flags or on a board at the side or stern of the RC boat.

**2017 West Shore Sail Club
Wednesday Night at the Races
Course Diagram
(Not to be used for navigation)**

C	N42.01.3854	W083.06.6223
E	N42.01.4959	W083.05.3077
NE	N42.02.1653	W083.05.8038
N	N42.02.3802	W083.06.7850
NW	N42.02.0057	W083.07.6806
W	N42.01.2687	W083.07.9782
SW	N42.00.6022	W083.07.4780
S	N42.00.3872	W083.06.4776
SE	N42.00.7527	W083.05.5806



2017 WSSC WNATR Race Courses

(Course direction cards are available on WSSC's website at <http://www.westshoresailclub.org/race>)

<u>Approximate Wind Direction</u>	<u>Course</u>	<u>Class</u>	<u>Mark Rounding Sequence</u>	<u>Distance</u>
345°-15°	N 1	SPINNAKER	Start C-Np-NWp-SWp-Sp-Np-Finish C	7.10 NM
		JAM	Start C-Np-Wp-NEp-Np-Finish C	6.04 NM
345°-15°	N 2	SPINNAKER	Start C-Ns-NEs-SWs-NWs-Finish C	6.18 NM
		JAM	Start C-Ns-NEs-Wp-Finish C	4.63 NM
350°-10°	N 3(WL)	SPINNAKER	Start C-Np-Sp-Np-Finish C	6.00 NM
		JAM	Start C-Np-Sp-NEp-Finish C	5.84 NM
5°-35°	NE 1	SPINNAKER	Start C-NEp-Np-SWp-Sp-NEp-Finish C	7.22 NM
		JAM	Start C-NEp-Wp-SWp-NEp-Finish C	6.59 NM
5°-35°	NE 2	SPINNAKER	Start C-NEp-NWp-Wp-SWp-Finish C	4.95 NM
		JAM	Start C-NEp-W-SWp-Finish C	4.62 NM
10°-30°	NE 3(WL)	SPINNAKER	Start C-NEp-SWp-NEp-Finish C	6.00 NM
		JAM	Start C-NEp-SWp-Ep-Finish C	5.82 NM
105°-75°	E 1	SPINNAKER	Start N-NEs-NWp-Wp-Ep-Finish N	6.35 NM
		JAM	Start N-NEs-Wp-Ep-Finish N	6.03 NM
105°-75°	E 2	SPINNAKER	Start N-NEs-Es-NWp-Cp-Finish N	5.37 NM
		JAM	Start N-NEs-Wp-Cp-Finish N	4.63 NM
155°-125°	SE 1	SPINNAKER	Start N-SEp-Ep-Cp-SEp-Finish N	6.48 NM
		JAM	Start N-SEp-Ep-Ws-Finish N	6.10 NM
155°-125°	SE 2	SPINNAKER	Start N-SEs-Cp-SWs-Finish N	5.70 NM
		JAM	Start N-SEs-SWs-Finish N	5.13 NM
155-125	SE 3	SPINNAKER	Start N-Es-Wp-Sp- Finish N	6.82 NM
		JAM	Start N-Es-Wp-Cp-Finish N	5.41NM
195°-165°	S 1	SPINNAKER	Start N-Sp-SEp-Cp-Sp- Finish N	6.80 NM
		JAM	Start N-Sp-SEp-Ep-NEp-Finish N	5.41 NM
195°-165°	S 2	SPINNAKER	Start N-Sp-NEp-Cs-Finish N	5.80 NM
		JAM	Start N-Sp-Ep-Cs-Finish N	5.30 NM
190°-170°	S 3(WL)	SPINNAKER	Start N-Sp-Cp-Sp-Finish N	6.00 NM
		JAM	Start N-Sp-Cp-Sp-Finish N	6.00 NM
215°-245°	SW 1	SPINNAKER	Start N-SWs-Ws-Cs-Sp-Finish N	6.64 NM
		JAM	Start N-SWs-Ws-Ep-Finish N	6.03 NM

215°-245°	SW 2	SPINNAKER	Start N-SWp-SEp-Cs-Finish N	5.28 NM
		JAM	Start N-SWp-SEp-Finish N	5.13 NM

Addendum A –WSSC WNATR Race Courses (Continued)

<u>Approximate Wind Direction</u>	<u>Course</u>	<u>Class</u>	<u>Mark Rounding Sequence</u>	<u>Distance</u>
255°-285°	W 1	SPINNAKER JAM	Start C-Wp-SWp-SEp-Ep-Wp-Finish C Start C-Wp-SEp-NWp-Finish C	7.00 NM 5.89 NM
255°-285°	W 2	SPINNAKER JAM	Start C-Wp-SWp-SEp-Ep- Finish C Start C-Wp-SEp-Ep-Finish C	5.00 NM 4.64 NM
260°-280°	W3(WL)	SPINNAKER JAM	Start C-Wp-Ep-Wp-Finish C Start C-Wp-Ep-Wp-Finish C	6.00 NM 6.00 NM
295°-325°	NW 1	SPINNAKER JAM	Start C-NWp-SEp-Ep-NWp-Finish C Start C-NWp-SWp-NEp-Finish C	6.68 NM 5.40 NM
295°-325°	NW2	SPINNAKER JAM	Start C-NWp-SEp-Np-Finish C Start C-NWp-SWp-Ns-Finish C	5.87 NM 5.27 NM
290°-310°	NW3(WL)	SPINNAKER JAM	Start C-NWp-SEp-NWp-Finish C Start C-NWp-SEp-NWp-Finish C	6.00 NM 6.00 NM